

# R25 Kingscliff RAIR

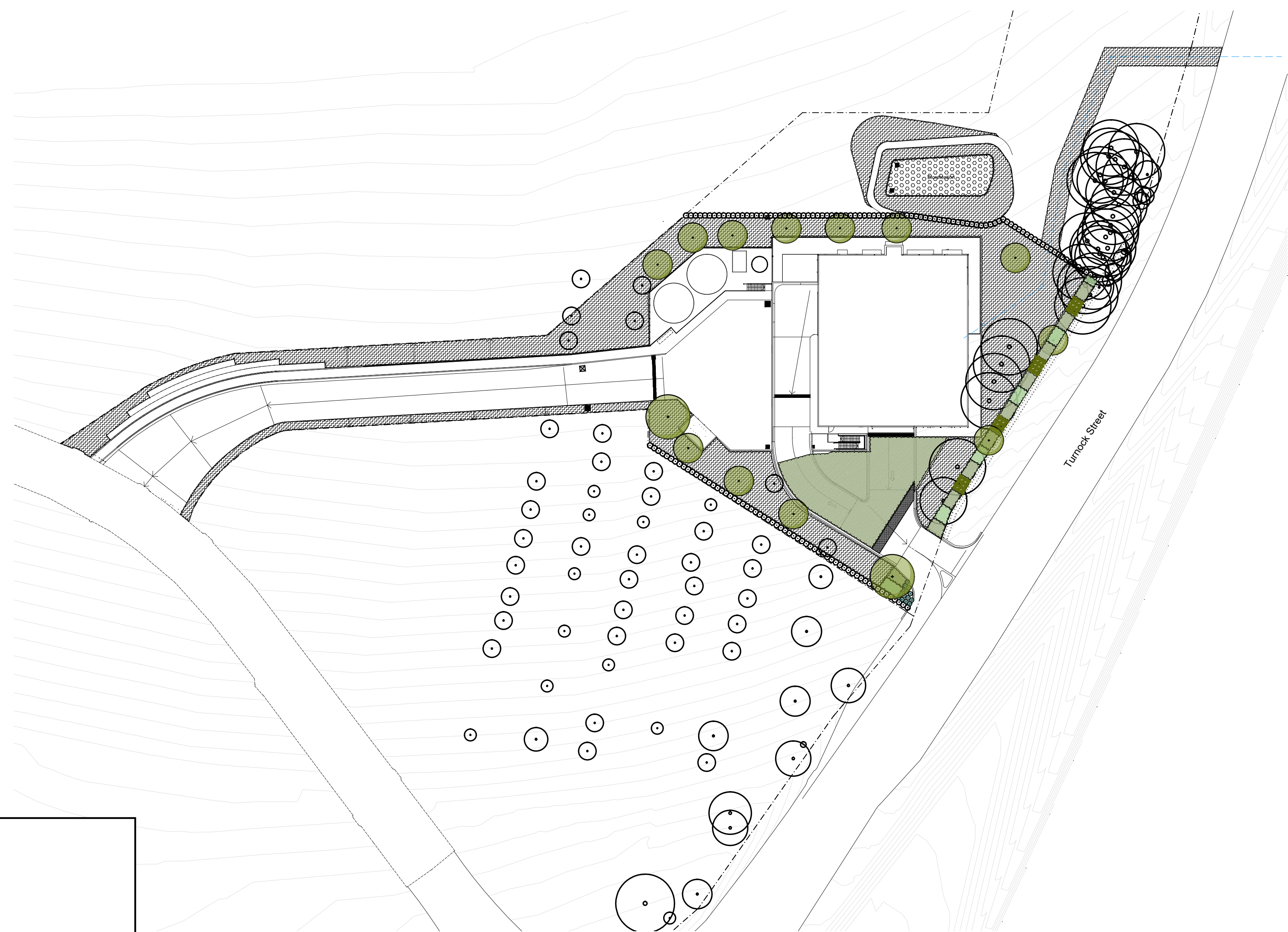
## Kingscliff, NSW, 2487 LOT11 : DP1269398

### Tender

#### Drawing Schedule

Drawing Number	Drawing Title	Scale
R25-LA-000	Landscape Coversheet	N/A
R25-LA-101	Landscape Plan	1:200
R25-LA-102	Landscape Plan	1:200
R25-LA-501	Landscape Details	As Shown

Plant Schedule						
	Botanic Name	Common Name	Mature Size (h x w) (m)	Spacing	Pot Size	Quantity
TREES						
Can	<i>Cupaniopsis anacardioides</i>	Turkeroo	15 x 5	As Shown	100L	2
WF	<i>Waterhousea floribunda</i> 'Green Avenue'	Weeping Lily Pilly	8 x 5	As Shown	100L	12
SHRUBS						
CBJ	<i>Callistemon viminalis</i> 'Better John'	Better John	1.2 x 0.9	As Shown	300mm	14
Cp	<i>Crinum pedunculatum</i>	Swamp Lily	2 x 2	As Shown	300mm	48
Wfr	<i>Westringia fruticosa</i>	Coastal Rosemerry	2 x 2	As Shown	300mm	154
GRASSES AND GROUNDCOVERS						
Cant	<i>Cissus antarctica</i>	Kangaroo Vine	0.3 x 0.5	4/sqm	150mm	1168
Cg	<i>Carpobrotus glaucescens</i>	Pigface	.1 x 2	5/sqm	150mm	73
Dc	<i>Dianella caerulea</i>	Flax Lily	.4 x .4	5/sqm	150mm	124
Dr	<i>Dianella revoluta</i>	Blueberry Lily	1 x 2	5/sqm	150mm	60
Hs	<i>Hibbertia scandens</i>	Snake Vine	.1 x 1	5/sqm	150mm	95
LI	<i>Lomandra longifolia</i>	Matt Rush	1 x 1	5/sqm	150mm	60
Mp	<i>Myoporum parvifolium purpurea</i>	Boobialla	0.3 x 2.5	5/sqm	300mm	60
Matrix Planting						
Ad	<i>Austromyrtus dulcis</i>	Midgen Berry	1 x 1	5/sqm	Tube	371
CLJ	<i>Callistemon 'Little John'</i>	Bottlebrush	1 x 1	5/sqm	Tube	593
WAB	<i>Westringia fruticosa</i> 'Aussie Box'	Native Rosemary	0.6 x 0.6	5/sqm	Tube	1038
Hs	<i>Hibbertia scandens</i>	Trailing Guidea Flower	0.5 x 1	5/sqm	Tube	519
LI	<i>Lomandra longifolia</i>	Matt Rush	0.7 x 0.5	5/sqm	Tube	1112
Dc	<i>Dianella caerulea</i>	Flax Lily	0.7 x 1	5/sqm	Tube	1706
Hv	<i>Hardenbergia violacea</i>	False Sarsaparilla	3 x 1.3	5/sqm	Tube	890
Bioretention Basin Mix Planting						
Ca	<i>Carex appressa</i>	Tall Sedge	1 x 1	10/m2	150mm	112
Fn	<i>Ficinia nodosa</i>	Club Rush	1 x 1	10/m2	150mm	112
Ju	<i>Juncus usitatus</i>	Common Rush	1.2 x 1.5	10/m2	150mm	112
LI	<i>Lomandra longifolia</i>	Mat-rush	1 x 0.8	10/m2	150mm	112
Jp	<i>Juncus prismatocarpus</i>	Branching Rush	0.6 x 0.3	10/m2	150mm	112



Site Plan | Scale 1:500

NOT FOR CONSTRUCTION

© 2021 Site Image (NSW) Pty Ltd ABN 44 801 262 380 as agent for Site Image NSW Partnership. All rights reserved. This drawing is copyright and shall not be reproduced or copied in any form or by any means (graphic, electronic or mechanical including photocopy) without the written permission of Site Image (NSW) Pty Ltd Any license, expressed or implied, to use this document for any purpose what so ever is restricted to the terms of the written agreement between Site Image (NSW) Pty Ltd and the instructing party.

The contractor shall check and verify all work on site (including work by others) before commencing the landscape installation. Any discrepancies are to be reported to the Project Manager or Landscape Architect prior to commencing work. Do not scale this drawing. Any required dimensions not shown shall be referred to the Landscape Architect for confirmation.

I	Architectural Coordination	LW	NM	30.05.2022
H	Landscape Revisions	LW	NM	26.05.2022
G	Architectural Coordination	LW	NM	25.05.2022
F	Tender	LW	NM	19.05.2022
E	Architectural Coordination	LW	NM	22.04.2022
D	Plant Schedule Amendment	LW	NM	08.03.2022
C	Architectural Coordination	LW	NM	01.03.2022
B	Architectural Coordination	LW	NM	15.02.2022
A	Preliminary	RH	NM	20.01.2022
Issue	Revision Description	Drawn	Check	Date



Health  
Infrastructure

**DETERMINED – APPROVAL**

REF Approval No: 07/2023

Date: 29/03/2023

Signed by: 

SITE IMAGE



Landscape Architects

Level 1, 3-5 Baptist Street  
Redfern NSW 2016  
Australia

Tel: (61 2) 8332 5600  
Fax: (61 2) 9698 2877  
www.siteimage.com.au

Client



Health  
Infrastructure



Project

R25 Kingscliff RAIR

Kingscliff, NSW, 2487

LOT11: DP1269398

Drawing Name  
Landscape Coversheet

Scale  
Job Number  
SS22-4855

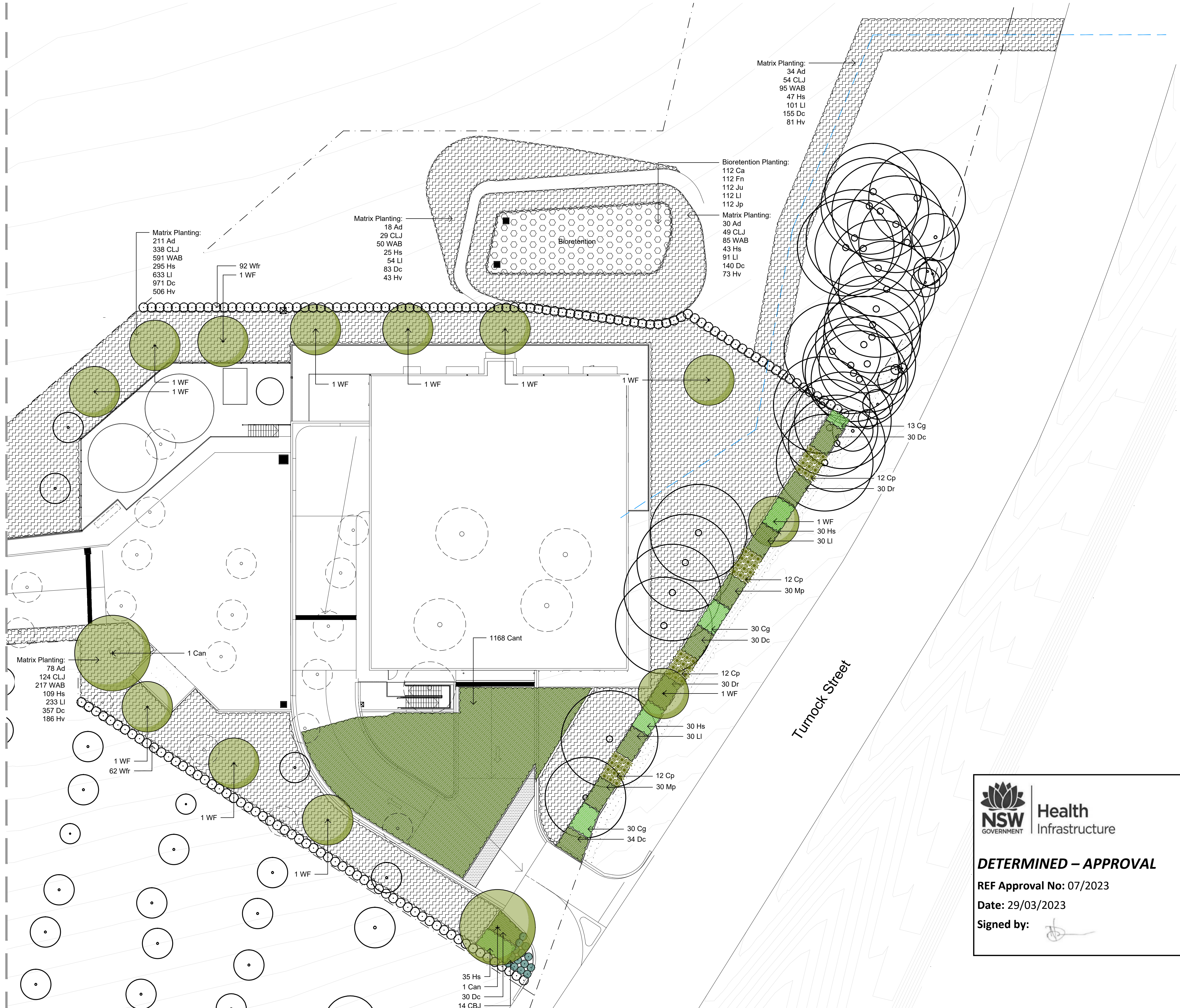
Tender

Drawing Number  
R25-LA-000

Issue  
I



For continuation refer 102



NOT FOR CONSTRUCTION


© 2021 Site Image (NSW) Pty Ltd ABN 44 801 262 380 as agent for Site Image NSW Partnership. All rights reserved. This drawing is copyright and shall not be reproduced or copied in any form or by any means (graphic, electronic or mechanical including photocopy) without the written permission of Site Image (NSW) Pty Ltd. Any license, expressed or implied, to use this document for any purpose what so ever is restricted to the terms of the written agreement between Site Image (NSW) Pty Ltd and the instructing party.


The contractor shall check and verify all work on site (including work by others) before commencing the landscape installation. Any discrepancies are to be reported to the Project Manager or Landscape Architect prior to commencing work. Do not scale this drawing. Any required dimensions not shown shall be referred to the Landscape Architect for confirmation.


H	Architectural Coordination
G	Landscape Revisions
F	Architectural Coordination
E	Tender
D	Architectural Coordination
C	Architectural Coordination
B	Architectural Coordination
A	Preliminary
Issue	Revision Description




LW	NM	30.05.2022
LW	NM	26.05.2022
LW	NM	25.05.2022
LW	NM	19.05.2022
LW	NM	22.04.2022
LW	NM	01.03.2022
LW	NM	15.02.2022
RH	NM	20.01.2022
Drawn	Check	Date


**Legend**

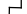
 Boundary


 Tree to be Removed

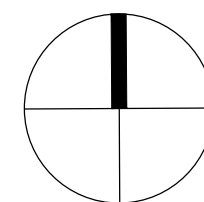
 Tree to be Retained

-  **Proposed Tree**  
Refer Schedule and Detail
-  **Shrubs and Accents**  
Refer Schedule and Detail
-  **Massed Grasses and Groundcovers**  
Refer Schedule and Detail

 Matrix Planting

 Bioretention  
Matrix Planting

 Sewer Main  
Refer Hydraulic Engi  
Drawings

 Gravel

**S I T E I M A G E**



**Landscape Architects**

**Level 1, 3-5 Baptist Street  
Redfern NSW 2016  
Australia**

**Tel: (61 2) 8332 5600  
Fax: (61 2) 9698 2877  
[www.siteimage.com.au](http://www.siteimage.com.au)**

Drawing Name

Landscape Plan

Scale 1:200 @ A1  
Job Number  
**SS22-4855**

Tender

0 1 2 4 6 10m  
Drawing Number Issue

R25-LA-101 H



For continuation refer 101



Health  
Infrastructure

**DETERMINED – APPROVAL**

REF Approval No: 07/2023

Date: 29/03/2023

Signed by: 

NOT FOR CONSTRUCTION

© 2021 Site Image (NSW) Pty Ltd ABN 44 801 262 380 as agent for Site Image NSW Partnership. All rights reserved. This drawing is copyright and shall not be reproduced or copied in any form or by any means (graphic, electronic or mechanical including photocopy) without the written permission of Site Image (NSW) Pty Ltd. Any license, expressed or implied, to use this document for any purpose what so ever is restricted to the terms of the written agreement between Site Image (NSW) Pty Ltd and the instructing party.

The contractor shall check and verify all work on site (including work by others) before commencing the landscape installation. Any discrepancies are to be reported to the Project Manager or Landscape Architect prior to commencing work. Do not scale this drawing. Any required dimensions not shown shall be referred to the Landscape Architect for confirmation.

B	Architectural Coordination
A	Tender
Issue	Revision Description

LW	NM	25.05.2022
JD	NM	20.01.2022
Drawn	Check	Date

Legend

Boundary

Tree to be Removed

Tree to be Retained

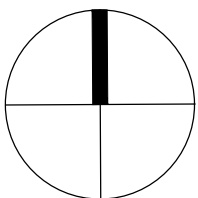
Proposed Tree  
Refer Schedule and Detail

Shrubs and Accents  
Refer Schedule and Detail

Massed Grasses and  
Groundcovers  
Refer Schedule and Detail

Matrix Planting

Bioretention  
Matrix Planting



SITE IMAGE



Landscape Architects  
Level 1, 3-5 Baptist Street  
Redfern NSW 2016  
Australia  
Tel: (61 2) 8332 5600  
Fax: (61 2) 9698 2877  
www.siteimage.com.au

Client



Health  
Infrastructure



Project  
R25 Kingscliff RAIR  
Kingscliff, NSW, 2487  
LOT11: DP1269398

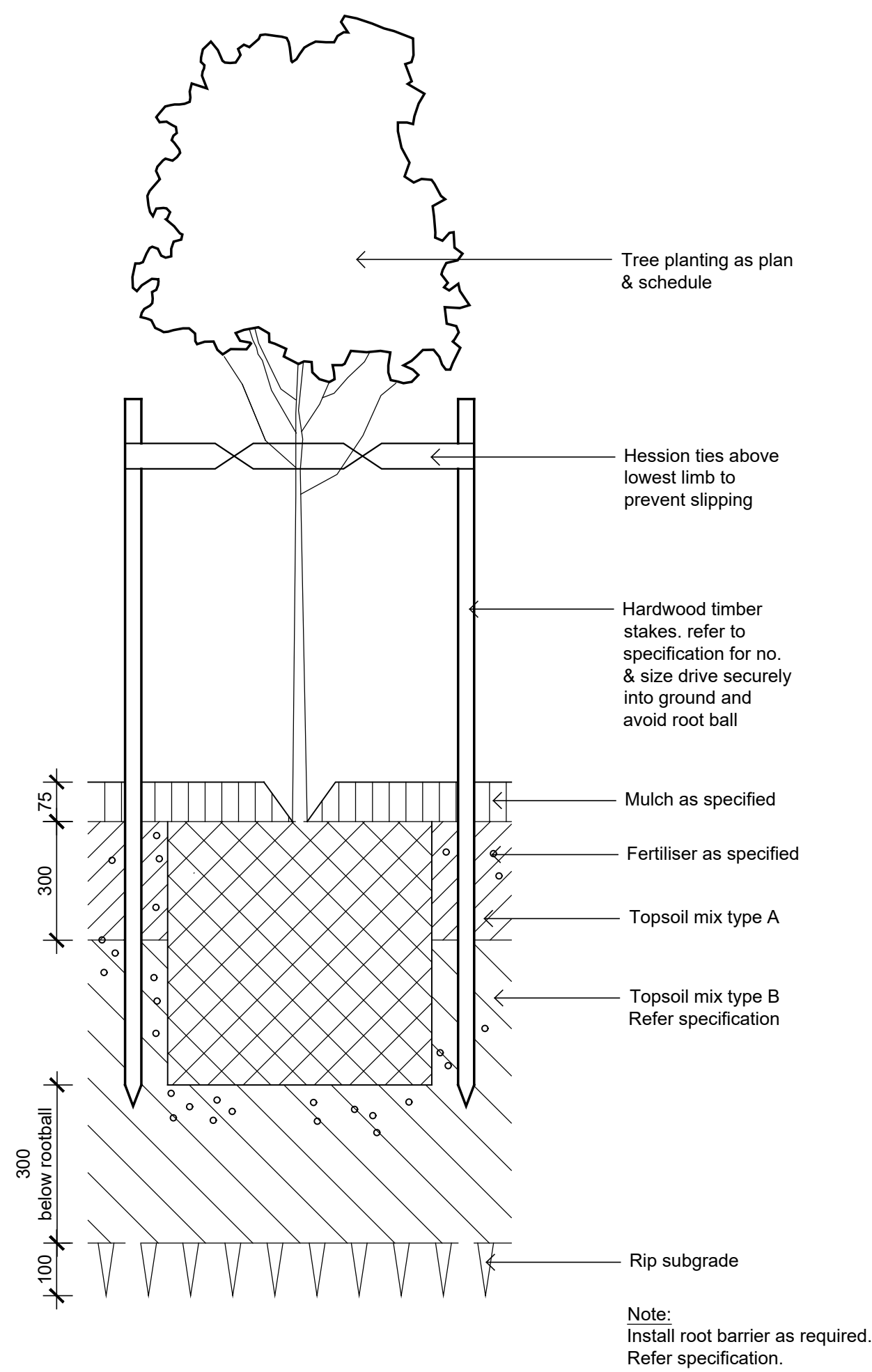
Drawing Name  
Landscape Plan

Scale 1:200 @ A1  
Job Number  
SS22-4855

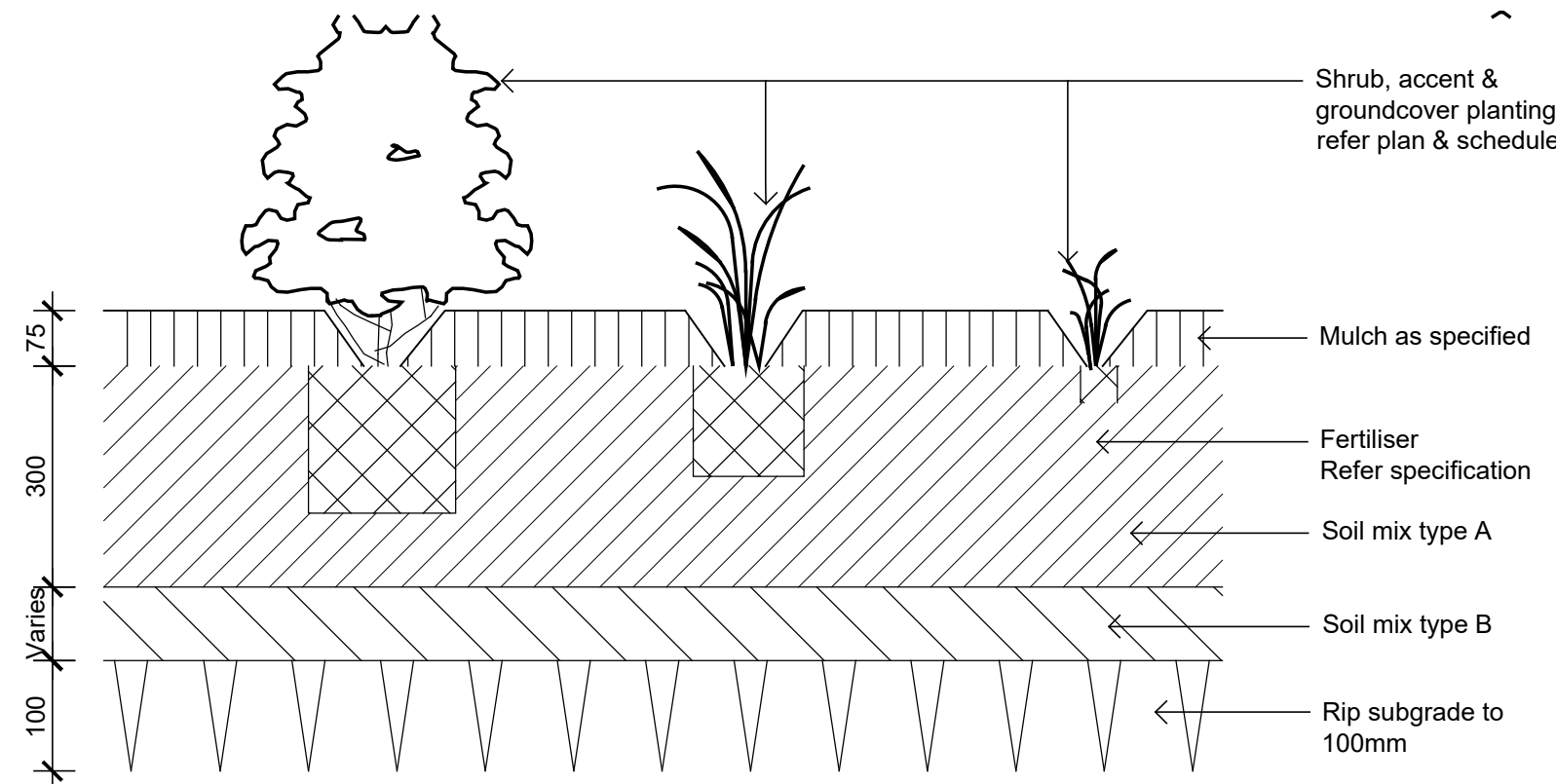
Tender

0 1 2 4 6 10m  
Drawing Number  
R25-LA-102 B

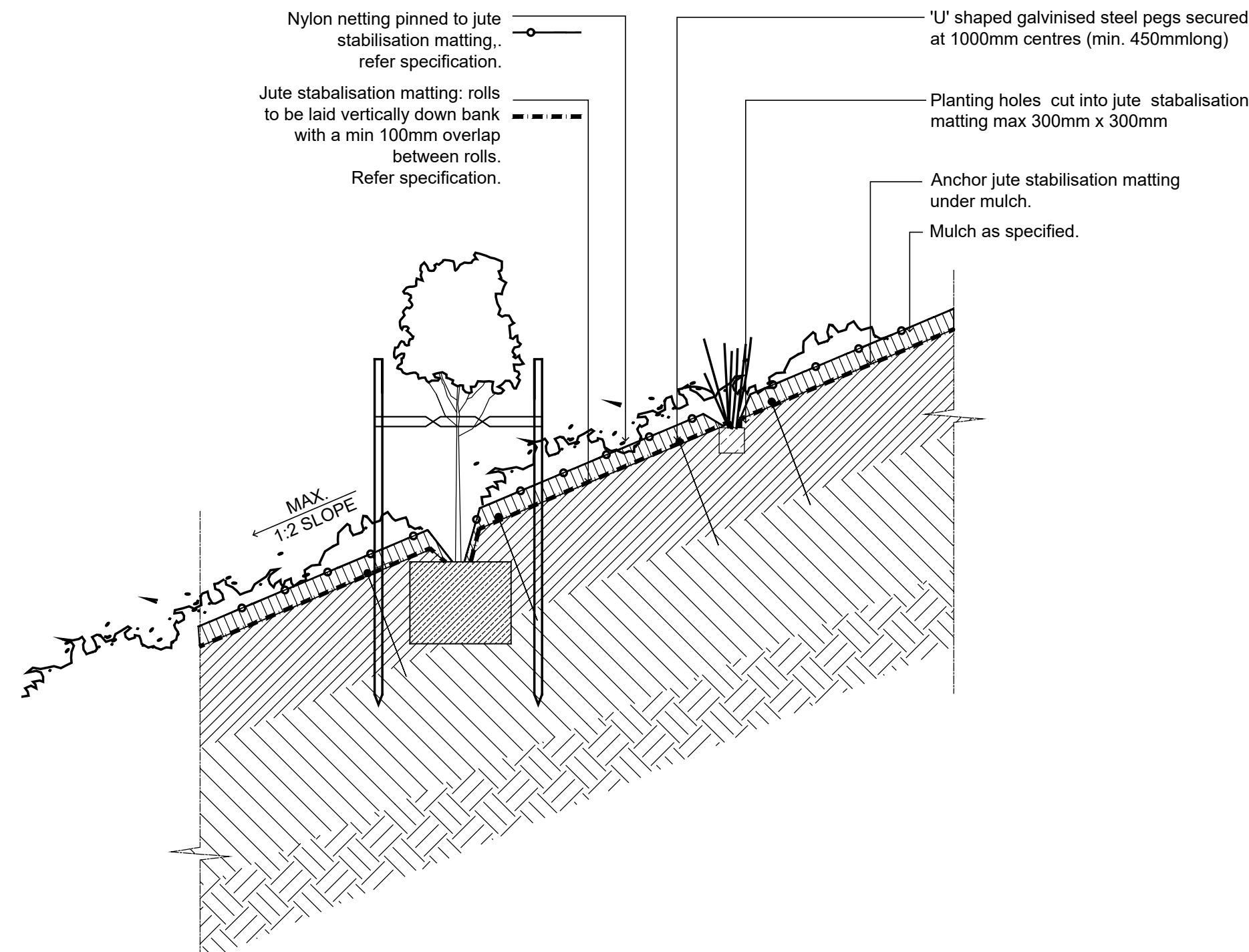
B



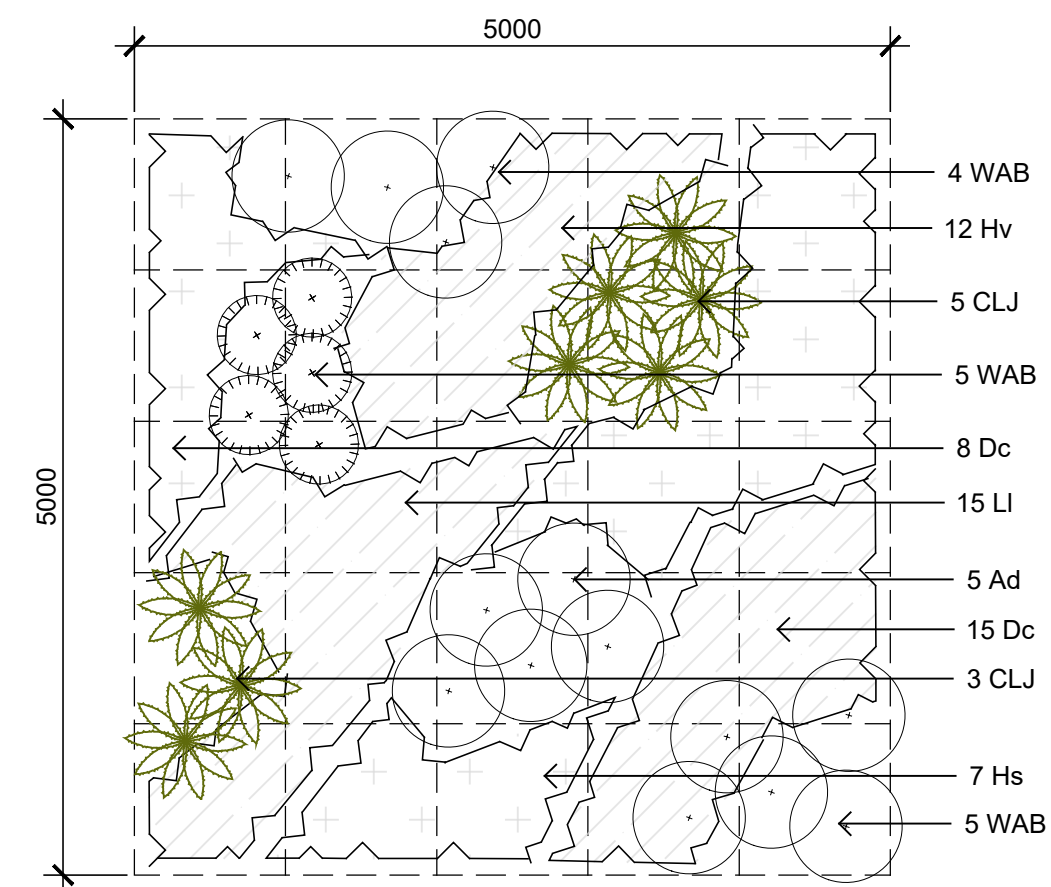
01  
501  
1:10  
Detail 75-200L Tree Planting on Grade



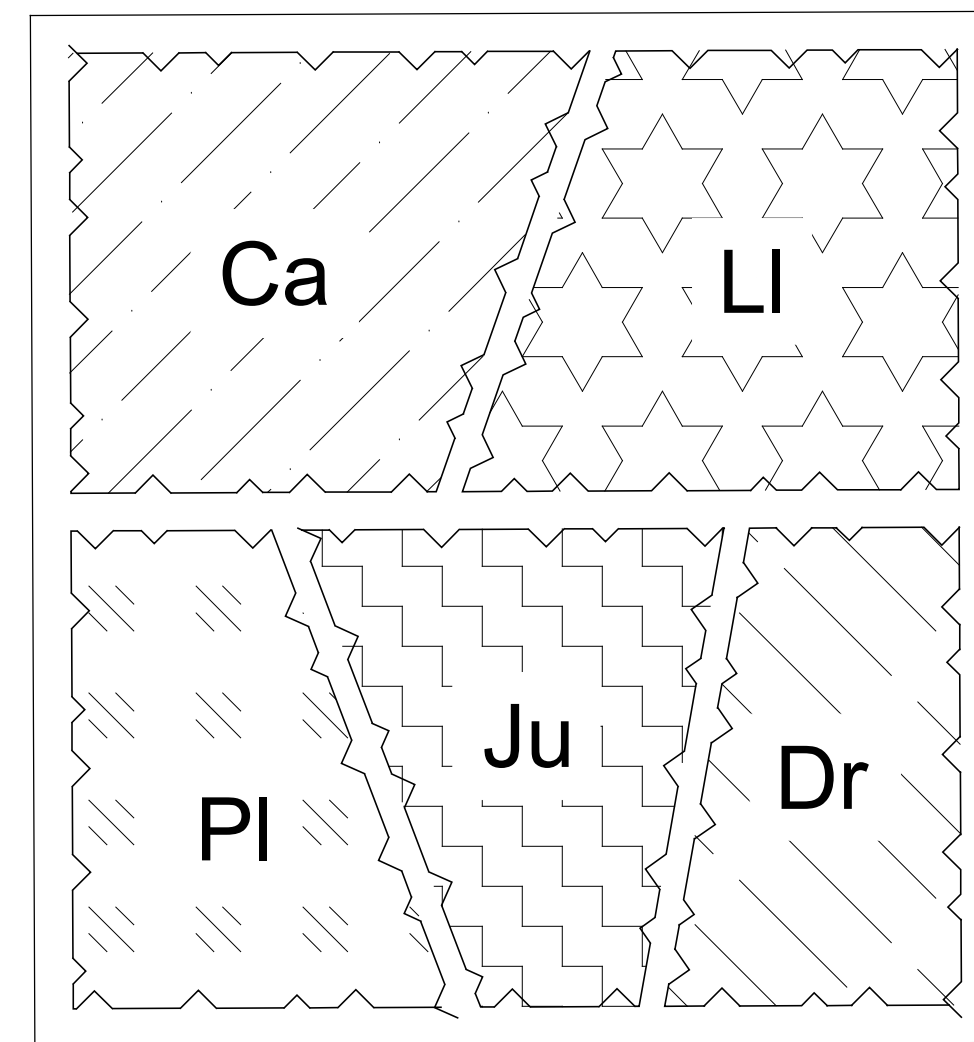
02  
501  
1:10  
Detail Shrub Accent & Groundcover Planting on Grade



03  
501  
1:20  
Typical Embankment Planting



04  
501  
1:50  
Planting Matrix



05  
501  
1:30  
Bio-Retention Basin Mix Planting

NOT FOR CONSTRUCTION

© 2021 Site Image (NSW) Pty Ltd ABN 44 801 262 380 as agent for Site Image NSW Partnership. All rights reserved. This drawing is copyright and shall not be reproduced or copied in any form or by any means (graphic, electronic or mechanical including photocopy) without the written permission of Site Image (NSW) Pty Ltd Any license, expressed or implied, to use this document for any purpose what so ever is restricted to the terms of the written agreement between Site Image (NSW) Pty Ltd and the instructing party.

The contractor shall check and verify all work on site (including work by others) before commencing the landscape installation. Any discrepancies are to be reported to the Project Manager or Landscape Architect prior to commencing work. Do not scale this drawing. Any required dimensions not shown shall be referred to the Landscape Architect for confirmation.

C	Tender	LW	NM	19.05.2022
B	Architectural Coordination	LW	NM	01.03.2022
A	Preliminary	RH	NM	20.01.2022
Issue	Revision Description	Drawn	Check	Date



SITE IMAGE

Landscape Architects

Level 1, 3-5 Baptist Street  
Redfern NSW 2016  
Australia

Tel: (61 2) 8332 5600  
Fax: (61 2) 9698 2877  
www.siteimage.com.au

Client

NSW GOVERNMENT Health Infrastructure

NSW Ambulance

Project

R25 Kingscliff RAIR

Kingscliff, NSW, 2487

LOT11: DP1269398

Drawing Name

Landscape Details

Scale

Job Number

SS22-4855

Drawing Number

R25-LA-501

Issue

C

Tender